

Network Highlights 2022

*“There is no power for change
greater than a community
discovering what it cares about.”*

— MARGARET WHEATLEY



Dear friends,

At IMPACT, our work has always been guided by the voices and stories of those community members who are all too often unheard. Through deep listening, we're guided to create spaces that support, teach, build power, and catalyze action.

The past couple of years have been especially challenging for most of us; in different ways and to different degrees to be sure, but hard, nonetheless. Listening to community members has revealed to us the deep need for community care—that is, supporting each other to do for ourselves what we need in order to rest, recover, and thrive.

We believe that rooted and lasting equity and justice require transformation at all levels—individuals, communities, organizations, and systems. Care is at the heart of transformation as it's only through deep care and compassion that we're motivated to change.

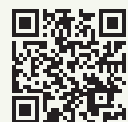


Please read on to see some of the ways in which IMPACT practiced and sparked community care during our 2021-22 program year.

Financial support from our network is critical for the development of innovative and thoughtful programming like those highlighted here. Please contribute to the extent that you are able to allow

us to continue with these caring efforts in 2023 by using the QR code below or by visiting www.impactsilverspring.org/donate-now/. Thank you for your past and current support of care in our community.

With love and care,
IMPACT Staff & Board



These are highlights from the approximately **40** programs, initiatives, and activities sponsored by IMPACT, involving over **2,500** local residents.

224 English language learners participated in our online English language classes which not only built skills, but also connected students to vital resources and services, and fostered supportive relationships with fellow students.



In June 2022, we amplified the rising threat of voter suppression to democracy with our in person viewing of the documentary "Suppressed and Sabotaged" which was followed by a panel discussion featuring local **VOTING RIGHTS** activists at AFI Silver Theater.



97% of community members who participated in an IMPACT workshop or training said they experienced an increased sense of economic, physical, and/or emotional well-being as a result of their participation.



We supported **7** action circles composed of **91** community members. Example projects included organizing neighborhood block parties to connect residents to resources and services, and cultivating soil-less gardening in apartment communities to combat food insecurity and promote wellness.

420 diverse residents attended our May 7 Health Fair in Wheaton where they were connected to more than 20 health and wellness providers like Montgomery Hospice, Latino Health Initiative, and the Colorectal Cancer Alliance.

During Black History Month, we hosted our first **"REST AS RESISTANCE"** online workshop, a Black affinity space facilitated by teacher and healer Brittany H. Brady exploring the socio-political concept introduced by scholar and activist Audre Lorde.



100+ students at JoAnn Leleck Elementary School participated in an IMPACT-sponsored, school-based community garden where they learned the fundamentals (and joys) of gardening and environmental stewardship.

11 students graduated from our first ever Cooking Class focused on building economic power by teaching skills needed to work (or start a small business) in the restaurant/food service industry.



805 youth participated in IMPACT's no-cost Sports Program which has provided continuous opportunities throughout the pandemic for children grades K-12 for physical activity, building athletic skills, and forming new friendships.





8807 Colesville Road, LL
Silver Spring, MD 20910

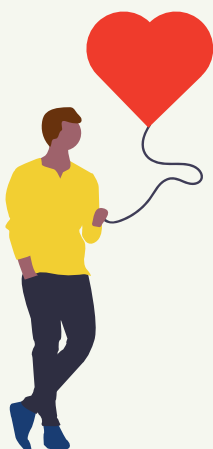
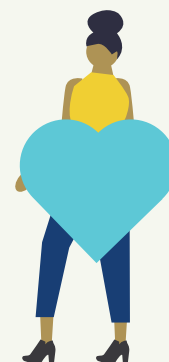
www.impactsilverspring.org
(301) 298-5117 / info@impactsilverspring.org



IMPACT thanks its network participants and supporters for a wonderful year!

IMPACT is grateful for the support of the following partners:

- Adventist HealthCare
- The Morris & Gwendolyn Cafritz Foundation
- CareFirst
- Christ Congregational Church
- Eat the Change
- Greater Washington Community Foundation
- Holy Cross Health
- if, A Foundation for Radical Possibility
- Kaiser Permanente
- MD-DE-DC Beverage Association
- Meyer Foundation
- MCAEL
- Montgomery County, Maryland
- Sisters of Mercy
- Unitarian Universalist Congregation of Rockville
- United Therapeutics Corporation
- Wade in the Water, A Racial Justice Ministry of Grace Episcopal Church
- Westmoreland Congregation Social Action Board



Staff:

- Fekadu Adbeb
- Keren Cabral
- Daniel Centeno
- Kyree Clark
- Carmen Hernández
- Oneyda Hernandez
- Harold Hill
- Renée Katz
- Ana Martinez (MORE Network)
- Wilfredo Medrano
- Eneshal Miller
- Sara Mussie
- Yesenia E. Regalado
- Michael Rubin
- Valerie Salazar
- Lanita Whitehurst

Board:

- Nanette Alvey
- Daniel Gebrie
- Jennifer Hoffpauir
- John Landesman
- Paul Purnell
- Brad Stewart
- Tia Taylor
- Paul Tiao
- Selvyn Vasquez