



IMPACT
SILVER SPRING

2016 Network Report



"I can never be what I ought to be until you are what you ought to be. This is the way our world is made. No individual or nation can stand out boasting of being independent. We are interdependent."

– Martin Luther King, Jr.

Dear Friends and Supporters,

This past year at IMPACT was largely devoted to clarifying our vision, mission, and network-building approach. We tested and refined our new Network Spaces framework in neighborhoods across the County. In this report, we are excited to share with you our new framework, as well as highlights of the actions and accomplishments generated in and through the IMPACT network over the past year.

We now know that organic networks—driven by hundreds of everyday people yearning to connect and ignite action—can be messy, beautiful, and powerful, all at the same time! Our new framework offers the network enough structure to stay organized, energized and moving forward, while also remaining fluid enough for ideas and actions to spontaneously emerge and take root. We are more convinced than ever that a network approach can transform the culture of our neighborhoods, our County, and ultimately our country from one of isolation, division, and fear, to one of connection, interdependence, and a sense of shared identity, unity and purpose.

To all of you who have been supporters and partners in our work, we thank you for giving so generously of your time, talent, and resources. And for those of you who may be learning of IMPACT for the first time, we hope you will consider joining and supporting our community of network innovators!

With Much Gratitude,



Jayne Park
Executive Director



IMPACT Silver Spring: Who We Are

At IMPACT, we believe that strong social connections and networks in our neighborhoods form the necessary foundation for thriving, multi-cultural communities. We also know, and research shows, that when people and neighborhoods have strong, deep, and resource-rich networks, they are happier, healthier, safer, more economically stable, and are more engaged in civic participation.

IMPACT works to build and strengthen networks in diverse neighborhoods. Our approach is to focus not on what neighborhood residents lack but rather on what gifts and talents they can offer. We focus not on what they need but on what they want to do. We focus not on creating new programs, but on creating the conditions that enable people to believe in their ability to connect and activate change with others.

Through a network-building approach, IMPACT creates diverse community “spaces” where people from all backgrounds can find their gifts and passions, connect and build relationships with others, and generate a multitude of small actions. When taken collectively, we believe that the generation of many small actions over time will ultimately lead to big changes and community breakthroughs.

Our Vision

We envision Montgomery County as a thriving, multi-cultural community where people of all backgrounds are engaged, connected, and exercising individual and collective power to bring about the changes needed for a full and quality life.

Our Theory of Change

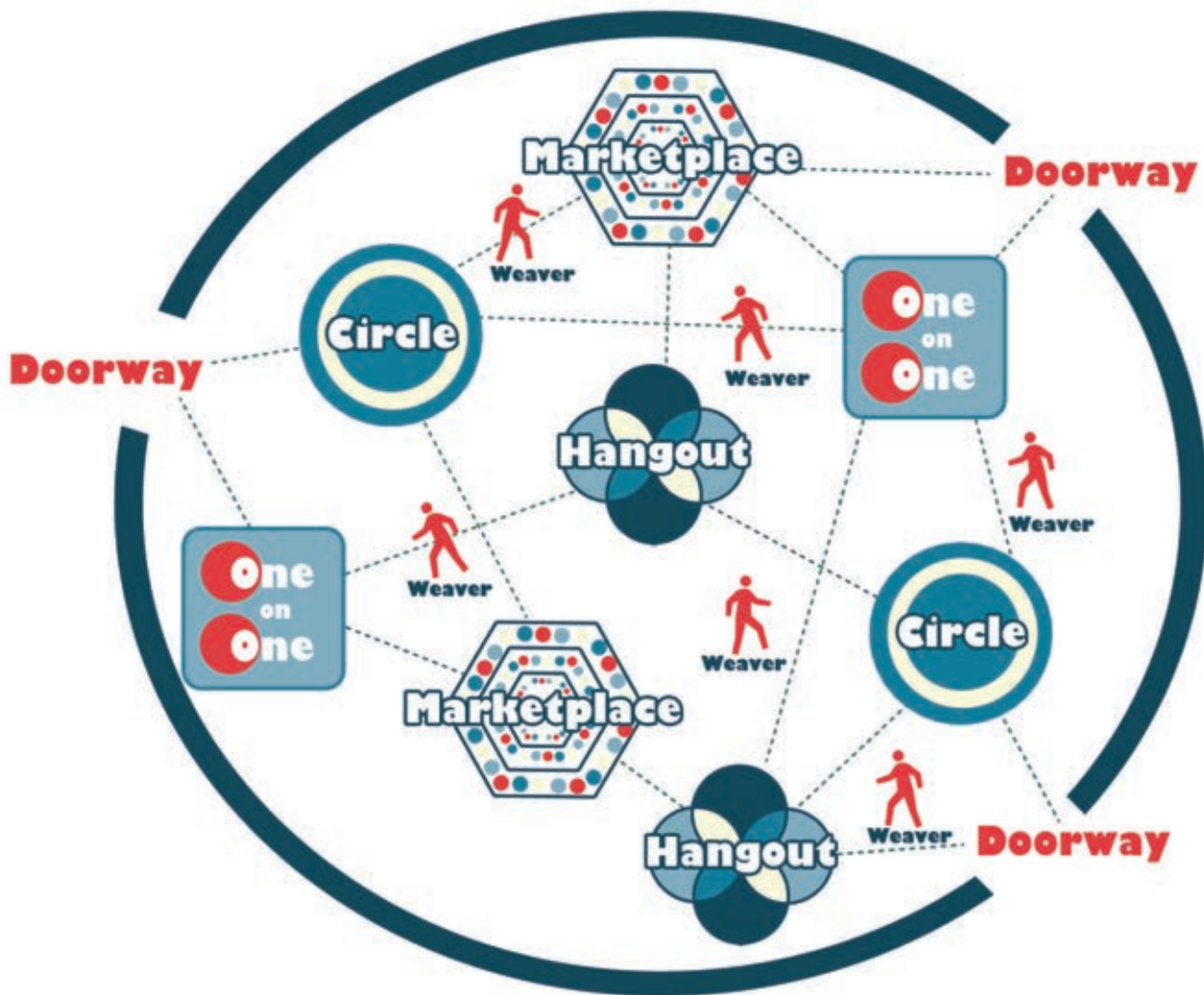
We believe positive change happens by connecting people, building relationships of trust, and exchanging value in an intentional network, across lines of difference.

Our Values

- We are human beings first. Our professional positions and identity are secondary.
- We take time to build relationships, and relate to each other from a place of trust.
- We believe that everyone has something to offer others and something they need from others.
We build relationships that are mutual and reciprocal.
- We focus on strengths and opportunities, and actively bring forward everyone’s gifts and talents.
- We support a local economy, placing the highest value on local capacities, resources, and talent.

IMPACT Silver Spring: Our Approach

Spaces Framework

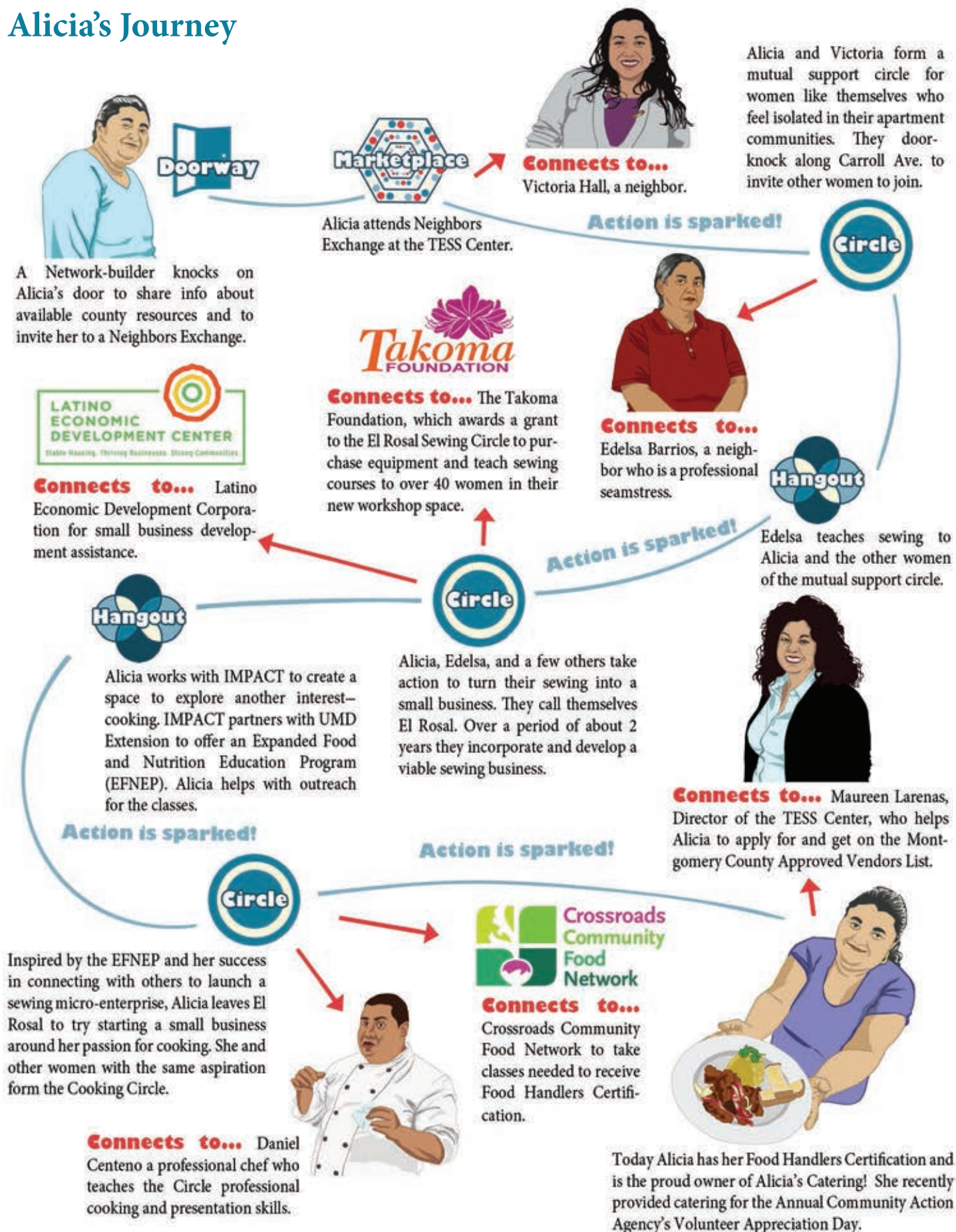


In each of the neighborhoods where we work, we build networks by:

- Creating **DOORWAYS** for people to enter the Network – like block parties, neighborhood clean-up days, and coffee chats at social service sites.
- Hosting **HANGOUT** spaces that address concrete issues of interest to residents, while providing relationship-building opportunities – like English classes, training for micro-entrepreneurs, and healthy nutrition practices. Issues are identified through our deep listening process.
- Supporting **ACTION CIRCLES** of residents who come together in small groups to take action around a shared goal that leads to positive change in their lives and community.
- Intentionally connecting people in different rooms to each other and to new people and resources through **MARKETPLACE** moments, enabling people to cross lines of difference, exchange information and favors, spark and support circles, and have fun together. Network Nights are an example of this strategy.
- Engaging in purposeful **ONE-ON-ONE** conversations to build relationships, make connections, extend invitations, and/or spark actions.

IMPACT Silver Spring: Individual Impact

Alicia's Journey



IMPACT Silver Spring: Community Impact

The Grandview Circle

Grandview Avenue in the Glenmont Forest neighborhood of Wheaton is a quaint area with its green lawns and 1950s ramblers. It's here that many members of the Grandview Circle call home. The Grandview Circle is one of the IMPACT Network's longest continuously running collaborative action groups, having formed in 2013. The Circle has a core membership of about 8 residents, but has touched hundreds of neighbors through its action projects. Circle meetings rotate among different members' homes and are held monthly. The Grandview Circle is particularly active in the civic arena, understanding the importance of having a voice in decisions impacting their community. As Circle member Victor Henriquez put it, "We want a community that is as welcoming to others as it was to us when we first arrived." Recent Circle actions include:



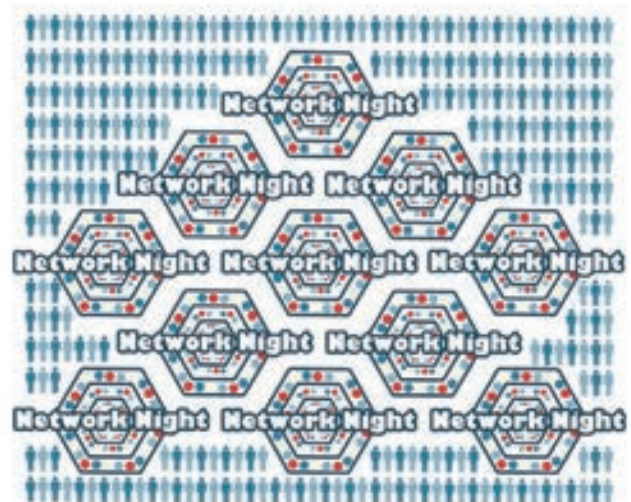
- **The Annual Grandview Block Party** which brings together hundreds of Glenmont Forest neighbors for food, fun, and to learn about available County resources and opportunities from service providers in attendance. For 2016, some 250 adults and children visited the outdoor event along with 15 service providers.
- **Providing input for the design of the upcoming Wheaton Recreation Center, Fire Station, and Library** which is scheduled to open in 2018. Grandview Circle members organized to attend Public Hearings and Community Workshops to give suggestions on the new facility. Some of their ideas were incorporated in the final building and site design.
- **Receiving two proclamations from the Montgomery County Council** for their ongoing advocacy work related to community public safety, traffic issues, and environmental stewardship.

IMPACT Spaces by the Numbers

5,105 low-income residents connected to needed food, health, legal and financial social services.



304 community members at **11** Network Nights grew their social networks--leading to increased sense of belonging, civic engagement, and economic and educational opportunities.



The East County Community Circle

Burtonsville's Cuba de Ayer restaurant is a favorite gathering spot for East County Community Circle members. These East County residents love their neighborhood and it shows. Not only in their support of local businesses like Cuba de Ayer, but also in their "anything's possible" attitude toward community-building. Members of this diverse Circle recognize opportunities for positive community impact and quickly self-organize to act on those opportunities. Silver Spring's Briggs Chaney neighborhood is the beneficiary of many of those actions. Circle members meet monthly, generally at the East County Community Center to share project updates, field new ideas, build relationships, and make connections. The Circle has a core membership of about 10 residents, but connects with many more neighbors through their community initiatives. Recent Circle projects include:



The Revitalization of the Maydale Nature Center which led to the shuttered Center receiving full funding for its renovation through a combination of a state bond bill and funding from the Montgomery County Parks Capital Improvements Program.

Community Clean-ups that bring seasonal trash removal events to areas along the Greencastle Trail, Robey Road, and at Edgewood Park. On average, 42 residents participate in each clean-up, with hundreds of pounds of trash and recyclables being removed from the Anacostia Watershed yearly. Eight members of the Circle are certified Stream Stewards.

The East County Senior Village project which brings together senior citizens to self-organize and leverage social networks to age-in-place. The group received official non-profit status in November 2015 and has a listed membership of 39 residents. They recently launched their website at www.eastcountyvillageseniors.org.

154 immigrant residents gained new skills and knowledge through language, parenting, nutrition, and small business Hangouts.



11 Action Circles generated **13** action projects that touched the lives of more than **700** residents, leading to cleaner and safer communities, healthier lifestyles, and increased social connectivity. To learn more about action projects, visit www.impactsilverpring.org/opportunity-circles.





Thank you to our sponsors



Christ Congregational Church



Office of the Montgomery County Executive

Montgomery County Council





IMPACT Sports Program



IMPACT Sports provides high quality recreational sports and enrichment for low-income and immigrant youth. The program forms and operates youth sports teams and after-school programs in neighborhoods where young people are often disconnected from local athletic leagues.

The program aims to:

- **Support** at-risk youth in the Long Branch, Wheaton and Briggs Chaney neighborhoods of Silver Spring to access year-round local recreational sporting activities that enable them to be more physically, socially, and psychologically fit while improving their skills in soccer and/or basketball.
- **Train** volunteer coaches in First Aid/CPR and provide regular coaching support and training.
- **Connect** interested parents, coaches, and other related adults to the greater IMPACT Network.

The History of IMPACT Sports

In 2011, IMPACT acquired the Long Branch Athletic Association (LBAA), and has incorporated it as a program providing youth with access to after-school sports teams and other enrichment opportunities. This is especially important in Montgomery County's low-income neighborhoods, where few opportunities exist for youth to participate in affordable, geographically accessible, team-based sports. While initially focused exclusively in the Long Branch neighborhood, IMPACT Sports expanded in 2014 to facilitate and support an emerging sports network in the Wheaton and Briggs Chaney communities. Our efforts to break down barriers to participation-- like cost and proximity of play-- have resulted in high levels of youth participation and parental involvement. Our goal is to merge the high quality, academy-style programs with the accessibility of recreational sports.

About IMPACT Silver Spring

For more than 15 years, IMPACT Silver Spring has been bringing people together to build diverse, place-based social networks in targeted neighborhoods that bridge differences and foster interconnectedness. Our vision is a thriving, multicultural community where people of all backgrounds are engaged, connected, and equipped to exercise individual and collective power. Toward this end, our mission is to build local networks that ignite inclusive local economies and vibrant communities.

2016 Sports Successes



Registered 1500 participants in recreational sports in Long Branch and Wheaton. Elementary- and middle-school-aged children participated in fall, spring and summer soccer (1100) and in winter basketball (325). Off-season basketball clinics served an additional 100 youth.



For the first time, we supported a U-13 Classic travel team in Montgomery Soccer. Despite being new to the league, the team won their division!



Supplied the necessary sports equipment for full participation in recreational soccer and basketball. IMPACT provides teams with basketballs, soccer balls, nets, cones, and practice and game jerseys. Through collaboration with Leveling the Playing Field, a local nonprofit organization, we are often able to provide jerseys and equipment for other sports (e.g., flag football) as well.



Recruited and trained volunteers to serve as licensed coaches and team coordinators. IMPACT recruited, trained, and supported over 60 volunteers to act as team coaches and coordinators. IMPACT Sports ensures that there is always a CPR-trained coach on-site.

Thank You to IMPACT Sports Sponsors



Office of the
Montgomery
County Executive

Montgomery
County Council

